

TECHNICAL DATA SHEET



KRASO® Sealing Insert Type VD/GR

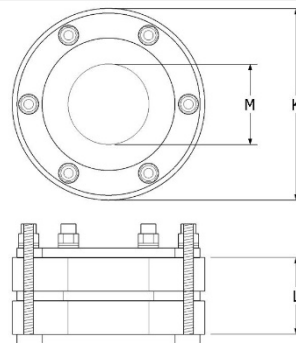
Application areas

Against pressing and non-pressing water, for core holes or casings for installation of smooth + ribbed pipes or cables, including KRASO® Torque Control Nut.

Product image



Technical drawing



Material

Clamping plates	stainless steel
Pressure distribution plate	stainless steel
Bolts	stainless steel
Washers	stainless steel
Nuts	Torque Control Nut KRASO® DKM
Seal	EPDM 50° +/-5° Shore

Technical details

- Torque Control Nut KRASO® DKM: integrated torque limiter – no torque wrench required
- according to FHRK basis for inspection GE 101 tested
- Radon tight IAF tested – meets the requirements for Radon areas according FHRK information sheet MB 101
- Axial bending of the media pipes up to 8° possible
- MPA gas- and water pressure tight, tested up to 2,0 bar

certificate [find in our download area](#)

Sealing insert Typ VD/GR

	100	125	150	200	250	300
K	100	125	150	200	250	300
M	0-75	0-100	0-125	0-175	0-225 ¹	0-275 ¹
L	80	80	80	80	80	80
Weight	2,6	3,8	5,4	9,2	14,0	20,0
Item no.	KDI100VDGR	KDI125VDGR	KDI150VDGR	KDI200VDGR	KDI250VDGR	KDI300VDGR

• K | core hole (mm) • M | media lines (mm) • L | seal (mm) • weight | in kg
¹ From 200 mm external diameter pipe or cable: KRASO® Sealing Insert Type VD/GR with 60 mm seal